

International Symposium
“Foresight in a Rapidly Changing World”

**SHAPING A NATION'S
RDI ECOSYSTEM IN
THE AGE OF AI**

Norsam Tasli Mohd Razali
MIGHT, Malaysia

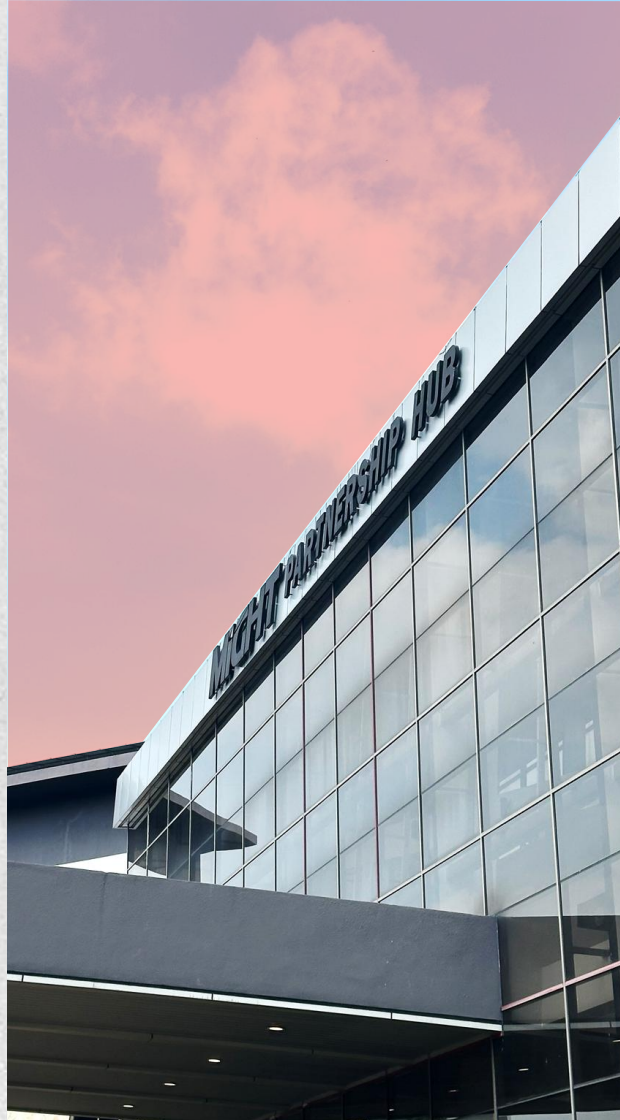
APRIL, 17
2026

PRESENTATION **Outline:**

1. About **MIGHT**
Malaysian Industry-Government Group
for High Technology
2. About **myForesight**[®] | Malaysian
Foresight
Institute
3. *AI scenarios:
Shaping RDI Ecosystem in the Age of AI*

MISSION

To serve the nation in advancing competency in high technology through partnership towards sustainable development.



MIGHT

*Malaysian Industry-Government Group
for High Technology*

A partnership technology think tank established in 1993 with the function to provide **strategic advice** to the government on developing the **high technology** sector. A government agency at present under the purview of the Ministry of Science, Technology & Innovation.

C O R E ACTIVITIES



Strategic Advice
to Government
and Industry



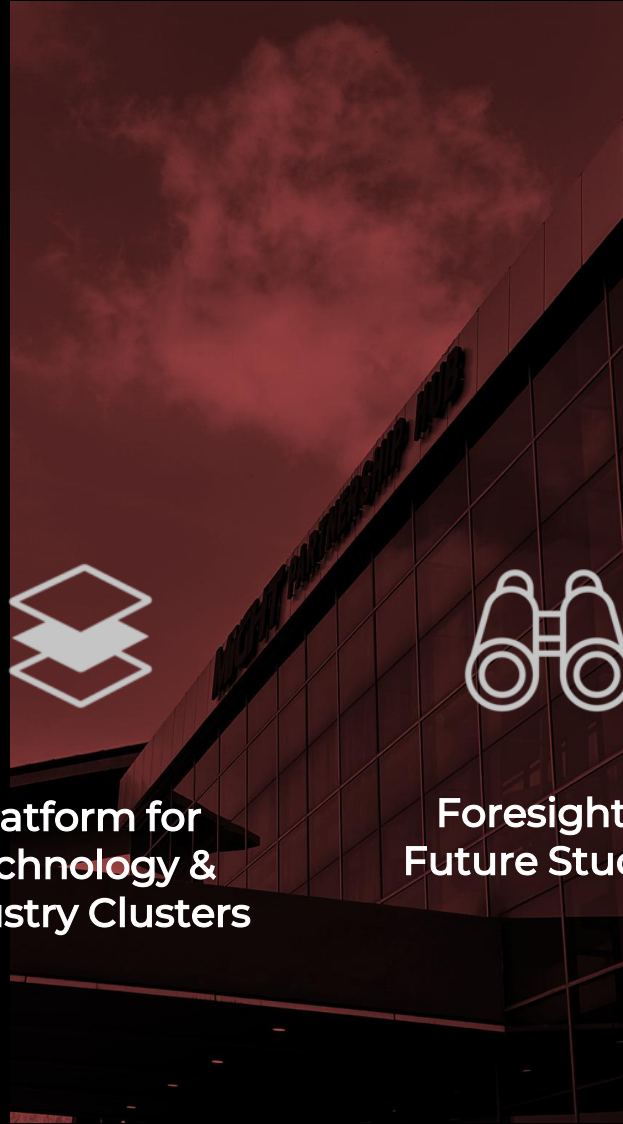
Platform for
Technology &
Industry Clusters



Foresight &
Future Studies



Nurture & Invest
to Build
Technology
Capabilities



solicited

Strategic Documents

White Papers

Opinion Pieces

Reports & Publications

Blueprints & Roadmaps

Policy briefs & Commentaries

Media

Communications

unsolicited

HIGHLIGHTS 33 YEARS

1 9 9 3 - 2 0 2 6



The conception of formula one Malaysia was done in MIGHT as means to advance the national capacity & capabilities....



...justify the need for major investments in the development of rail industry



...pioneered the concepts of Industrialized Building System & Modular Construction



Drive the development of aerospace industry in Malaysia



...instrumental in consolidation of the Telecommunications industry



...gave birth to notable strategic organizations.

INTERNATIONAL COLLABORATION

A unique approach to network and partner with Global Centers of Excellence and strategic platform for better knowledge sharing, cutting-edge technology updates and market access.

MULTILATERAL:



Asia Productivity Organization



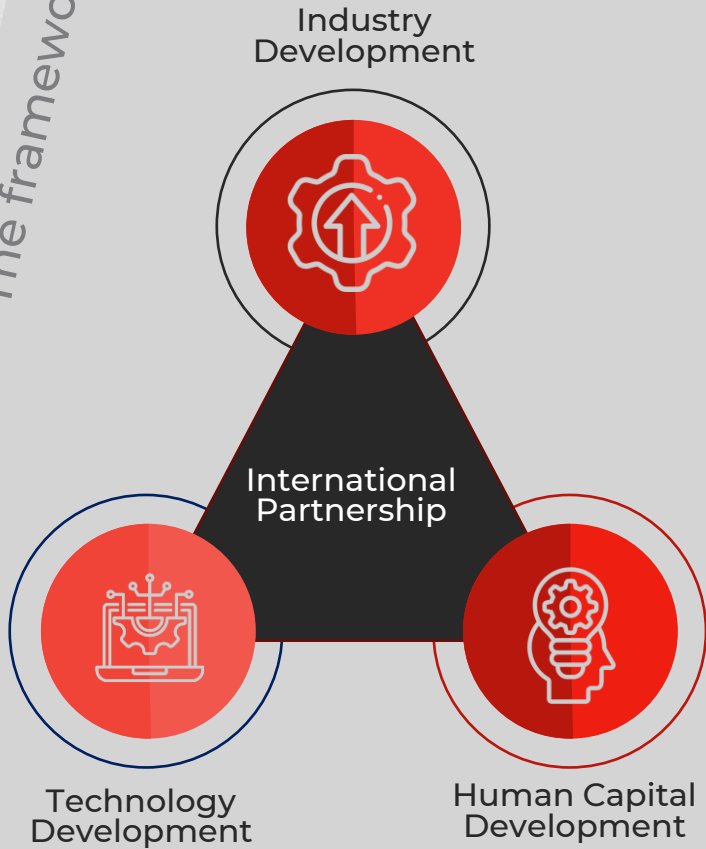
World Health Organizations

BILATERAL:



INTERNATIONAL COLLABORATION

The framework:



The programmes and collaborators:



Royal Academy of Engineering | Leaders in Innovation Fellowships



TÜBİTAK-MSE MIGHT 3.0 Grand Challenge



TÜBİTAK



MYSIP
Malaysia-Spain
Innovation Programme



MINISTRY OF HIGHER EDUCATION



CDTI Centro para el Desarrollo Tecnológico Industrial



INDONESIA-MALAYSIA
GRAND CHALLENGE



BRIN
BADAN RISET DAN INOVASI NASIONAL

About myForesight

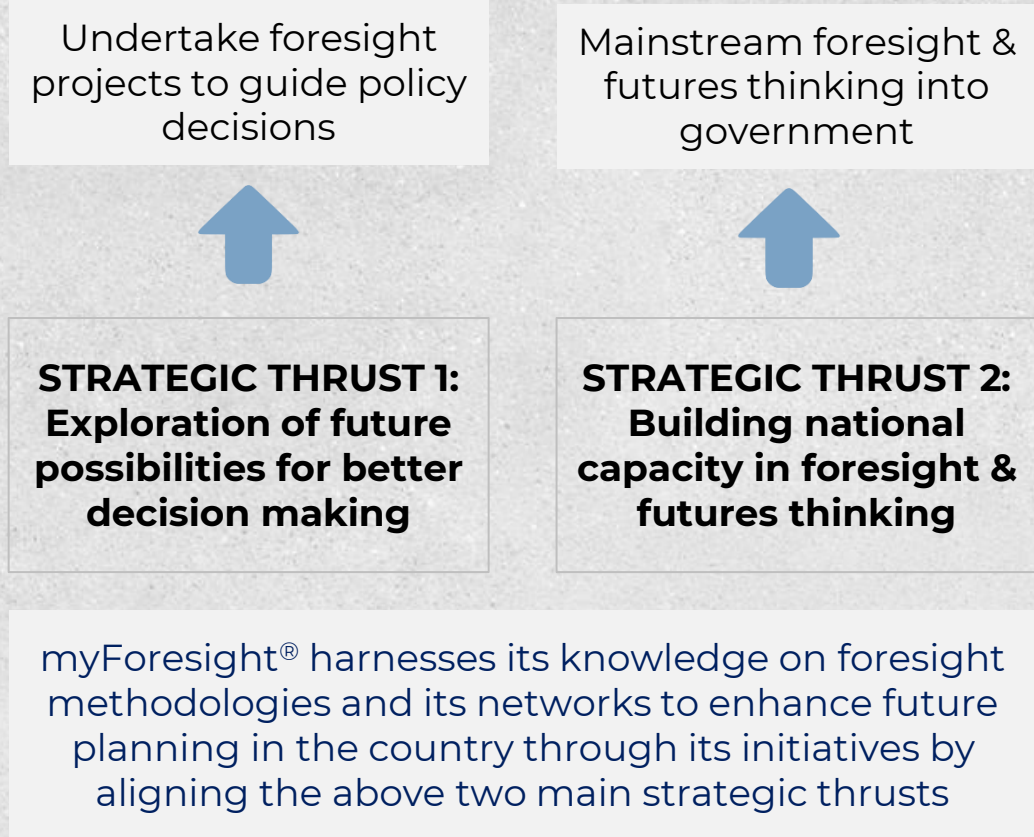
“...to be a renowned foresight centre that integrates ideas and promotes networking across a broad spectrum of individual futurists, private think tanks and academic establishments...”



myForesight[®]

**Malaysian
Foresight
Institute**

est.2012



myForesight[®] harnesses its knowledge on foresight methodologies and its networks to enhance future planning in the country through its initiatives by aligning the above two main strategic thrusts

myForesight is made up of individuals from a transdisciplinary background, contributing towards the development of numerous impact studies, roadmaps, blueprints, strategic plans & policy white papers.



Azammi



Shu Ying



Azmil



Norsam



Shaneeta



Nazreen



Ummu



Zulaikha

Together,
we make it
happen!

Interested to know more
about
myForesight?

<http://www.myforesight.my/>



myForesight/

**International Symposium
“Foresight in a Rapidly Changing World”**

**SHAPING A NATION'S
RDI ECOSYSTEM IN
THE AGE OF AI**

APRIL
2026



a changed world VUCA

volatility . uncertainty . complexity . ambiguity

speed & turbulence of
change

less
predictable

systemic
interdependencies

multitude of
options

CONVERGENCE OF AI + OTHER NEW AND EMERGING TECHNOLOGIES

What are next new and emerging technologies on the horizon?
What would be the next convergence?

SINGULARITY?

- Hypothetical point in the future when
AI surpasses human intelligence in all
aspects

Artificial General Intelligence (AGI)

Neuromorphic Computing

Quantum Computing

Ambient IoT and Smart
Dust

Optical Computing

Advanced Big
Data Analytics

Advanced Energy
Systems

Autonomous Robotics
and Swarm Robotics



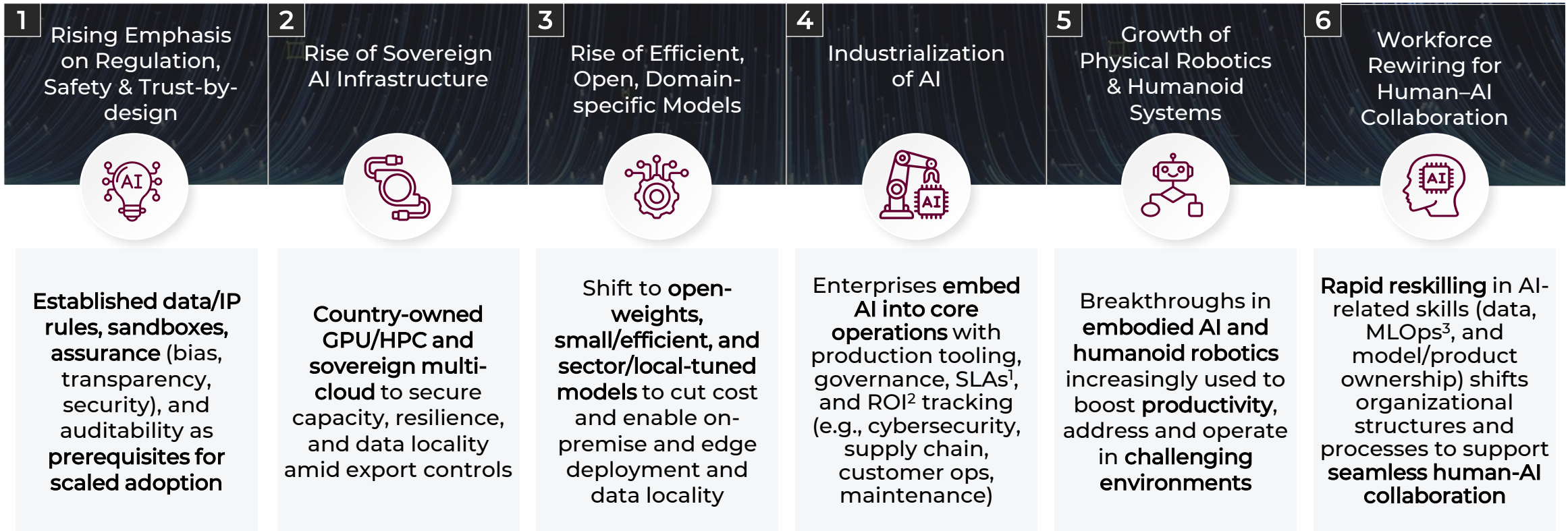
Impact? Disruptions?
Changes?



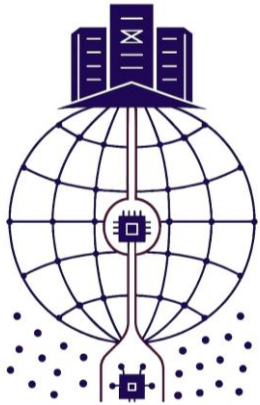
Level of Intelligence

AI adoption is accelerating, with strong momentum expected in the coming years driven by key emerging trends

TRENDS IN AI



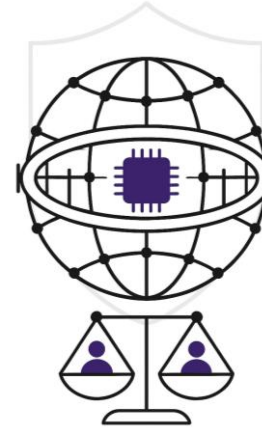
There are four plausible path towards the future of AI



Scenario 1: DEPENDENT AI

“A world ruled by a few.”

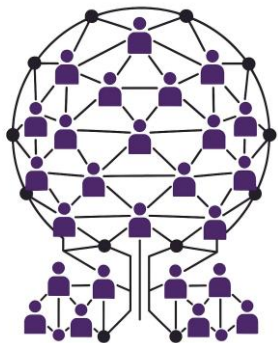
A future where the AI landscape is dominated by a small number of powerful players, whether they are multinational technology corporations, state-backed AI champions, or tightly integrated consortiums. These “titans” set the pace of innovation, control critical infrastructure, and hold disproportionate influence over the rules of AI development, access, and deployment.



Scenario 3: REGULATED AI

“Innovation under guardrails.”

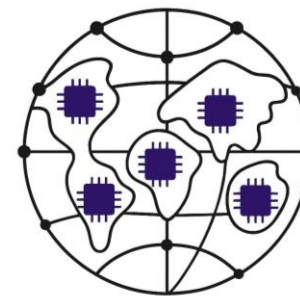
A future where AI is shaped by strong national and international regulation. Governments and global institutions set strict rules for safety, ethics, and accountability, placing guardrails on corporate power. While innovation may slow due to compliance requirements, AI systems are designed to align with public interest, human rights, and social trust. This world prioritizes control and risk management over speed and scale.



Scenario 2: DEMOCRATIC AI

“AI for everyone, everywhere.”





A future where AI is widely accessible, open, and collaborative. Open-source models, shared data platforms, and inclusive governance frameworks allow startups, researchers, and smaller nations to participate on equal footing. Innovation is distributed, transparency is valued, and collective problem-solving drives progress. In this world, AI development is less concentrated, and benefits are shared across diverse actors.



Scenario 4: SOVEREIGN AI

“AI built on national strength and controlled innovation.”

A future where nations secure technological independence through homegrown AI ecosystems, national data assets, and trusted compute infrastructure. Governments prioritize strategic autonomy, protecting data flows and critical algorithms from external control. Resilient alliances and local talent power innovation, ensuring national security, economic sovereignty, and sustainable competitiveness in a fragmented global AI landscape.

DIMENSION	DEPENDENT AI 	DEMOCRATIC AI 	REGULATED AI 	SOVEREIGN AI 
WHO CONTROLS AI POWER	Global tech giants and foreign IP holders	Open-source communities; distributed actors	Governments and multi-national regulatory bodies	Nation-states and strategic allies
INNOVATION MODEL	Imported; fast access but externally driven <i>(economic orientation - Importer) *</i>	Widely shared; collaborative and inclusive <i>(economic orientation - Collaborator) *</i>	Controlled; safe but slower experimentation <i>(economic orientation - Stabilizer) *</i>	Nationally owned; mission-driven innovation <i>(economic orientation - Producer) *</i>
DATA & COMPUTE OWNERSHIP	Foreign cloud + proprietary platforms	Shared data + open platform access	Sovereign data centers with strict governance	National infrastructure, local IP, and full autonomy
ECONOMIC VALUE CAPTURE	Global firms benefit most	Diversified entrepreneurship; broader local value	Stable growth in compliance & trusted markets	High economic sovereignty + export-ready IP
SKILLS & WORKFORCE CAPABILITY	Talent leakage to global leaders	Broad access → widespread skills uplift	Strong professionalization but conservative creativity	Deep national expertise + retention of advanced talent
GOVERNANCE STYLE & ETHICAL ALIGNMENT	External compliance; limited local influence	Inclusive governance; culturally aligned	Trusted oversight and strong policy enforcement	National values drive governance; strategic diplomacy needed
NATIONAL ADVANTAGE	Rapid adoption & short-term gains	Innovation diversity & broad participation	Global trust & stability in sensitive sectors	Sovereignty, resilience & long-term competitiveness

**Importer* – economic growth is driven by adopting foreign AI technologies and external innovation.

Collaborator – economic growth comes from open partnerships, shared platforms, and co-created solutions across a wide ecosystem.

Stabilizer - economic growth relies on trusted governance, predictable policy, and safe adoption that attracts responsible investment.

Producer - economic growth is led by national AI capabilities, homegrown IP, and exportable innovation with high local value capture.

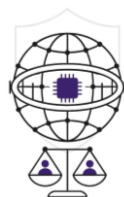
Scenario analysis activities

Impact & Implications

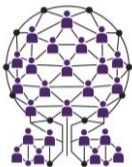
Q: If this scenario becomes reality, what immediate impacts, ripple effects, and long-term transformations would it create for the nation's RDI ecosystem and national trajectory?



**Scenario 1:
DEPENDENT AI**



**Scenario 3:
REGULATED AI**



**Scenario 2:
DEMOCRATIC AI**



**Scenario 4:
SOVEREIGN AI**

Opportunities & Threats

Q: What are potential opportunities and threats?

Opportunities

- *What unique opportunities does the nation have in this scenario (new markets, partnerships, talent strategies, etc.)?*

Threats

- *What are the biggest threats or risks the nation faces (dependency, fragmentation, exclusion, etc.)?*

Strategic Response

Q: What are potential interventions required to ensure the achievement of the opportunities and mitigation of vulnerabilities/threats?

Funding: How should the nation mobilize RDI resources and investments?

Infrastructure: What RDI physical/digital infrastructure needs strengthening?

Regulation/Policy: What RDI rules, governance, or standards are needed?

Skill & Talent: How do we build, attract, and retain the right expertise?

Technology/Application: What RDI applications or platforms should be developed or localized?

Partnership/Collaboration: Which partnerships (local, regional, global) should the nation pursue?

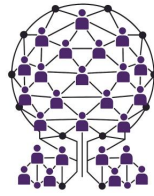
Scenario analysis: exploring the “what if...” situation



Scenario 1: DEPENDENT AI

What if the nation becomes reliant on AI built, owned, and controlled by others?

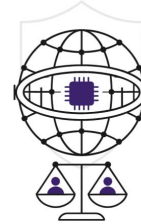
The country risks remaining an AI user rather than an AI producer, limiting domestic capability, strategic control, and long-term RDI competitiveness.



Scenario 2: DEMOCRATIC AI

What if AI advantage comes from openness, speed, and collaboration rather than sheer size?

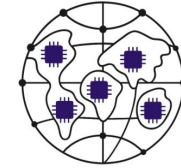
The country can build a more inclusive and dynamic RDI ecosystem by widening access, enabling participation, and moving faster through partnerships.



Scenario 3: REGULATED AI

What if trust and governance become the true basis of AI leadership?

The country can lead by building strong institutions, responsible rules, and credible regulatory systems that enable safe and sustainable RDI growth.



Scenario 4: SOVEREIGN AI

What if national strength depends on owning and securing the core foundations of AI?

The country builds resilience and strategic autonomy by investing in sovereign data, models, and compute that support long-term RDI development.

Strategic implications: what this means for the RDI ecosystem

Core implication

- The scenario analysis shows that AI can either accelerate national progress or create new forms of dependency, depending on how innovation, control, and sovereignty are managed.
- Long-term RDI competitiveness will depend on strengthening sovereignty over data, compute, talent, and governance.

F

Direct investments toward long-term capability building rather than dependence on external providers

I

Develop secure and interoperable data and compute infrastructure for resilience and autonomy

R

Build governance systems that balance agility, trust, and protection of national interests

S

Strengthen talent, entrepreneurship, and innovation capacity through open learning and ecosystem support

T

Promote locally developed and regionally exportable AI capabilities to support economic diversification

Taken together, these scenarios suggest that countries should pursue an RDI pathway that combines the openness and collaboration of **Democratic AI**, the trust and accountability of **Regulated AI**, and the autonomy and resilience of **Sovereign AI**, while avoiding the structural risks of a **Dependent AI future**.

International Symposium
"Foresight in a Rapidly Changing World"

Thank you

SHAPING A NATION'S
RDI ECOSYSTEM IN THE AGE OF AI

APRIL, 17
2026



Norsam Tasli Mohd Razali
MIGHT, Malaysia
norsamtasli@might.org.my